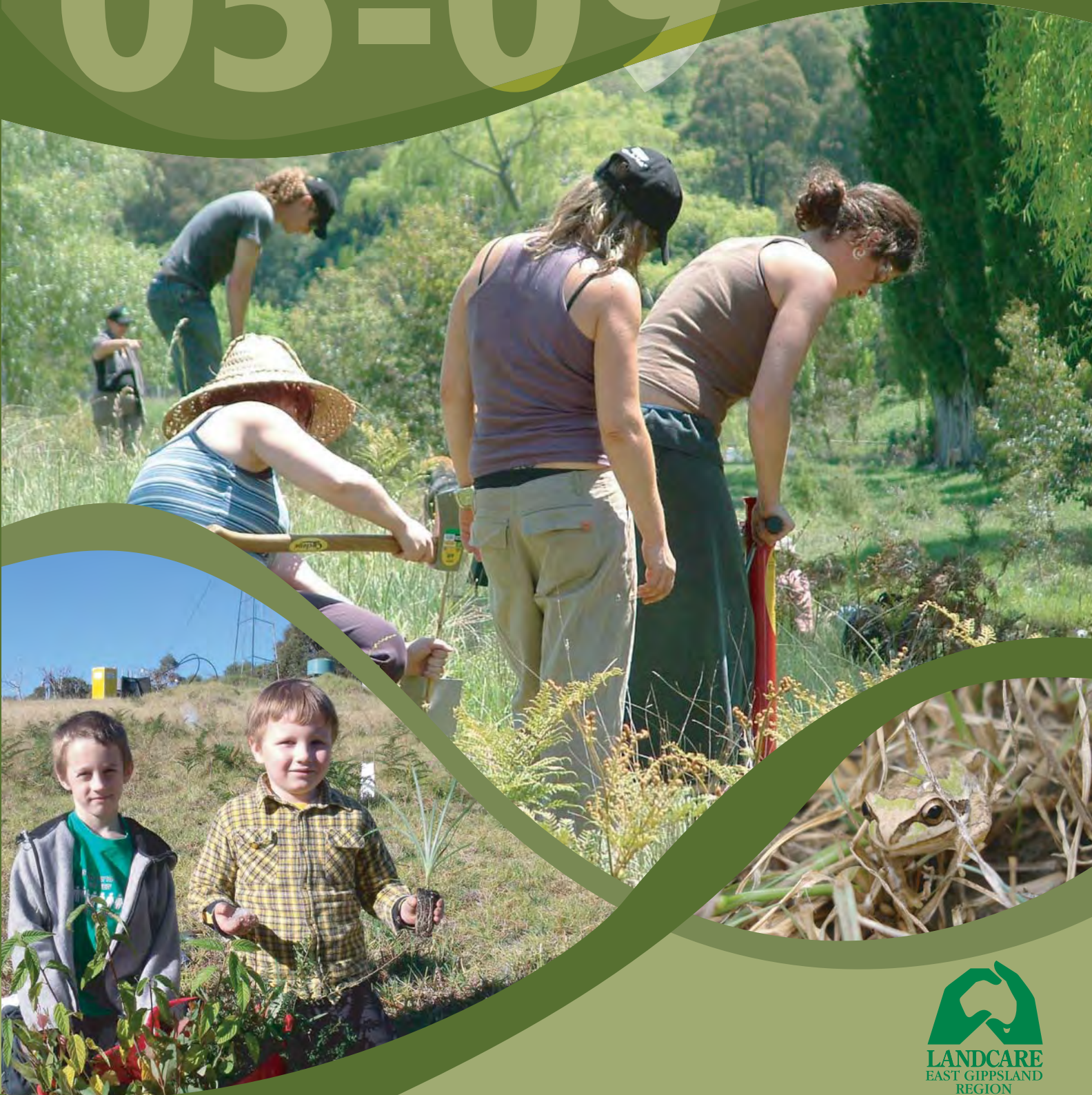


East Gippsland Landcare

The Past 5 Years

05-09



The average membership in Landcare groups in the region has varied (Figure 3). Reduction in membership has occurred due to factors such as poor economic conditions, natural disasters, and loss of group functionality. Memberships have also increased when Landcare groups are healthy, have sufficient project funds for works and activities align with people's direct interests.

Each year Landcare groups rate themselves from 1 (stalled) to 5 (thriving) on functionality and processes against a set of indicators that consider planning, capacity, systems, resources, support, confidence and partnerships. This assessment provides an evaluation of the groups and what areas groups can potentially improve on into the future (Figure 4).

“The Landcare community in East Gippsland is active, strong and supportive”

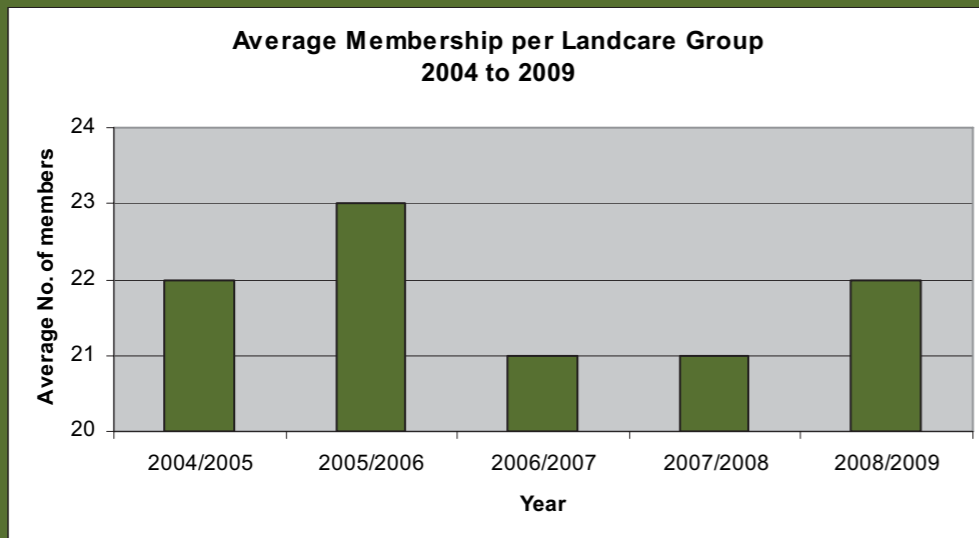


Figure 3 – The average group membership in landcare groups across East Gippsland from 2004 to 2009.

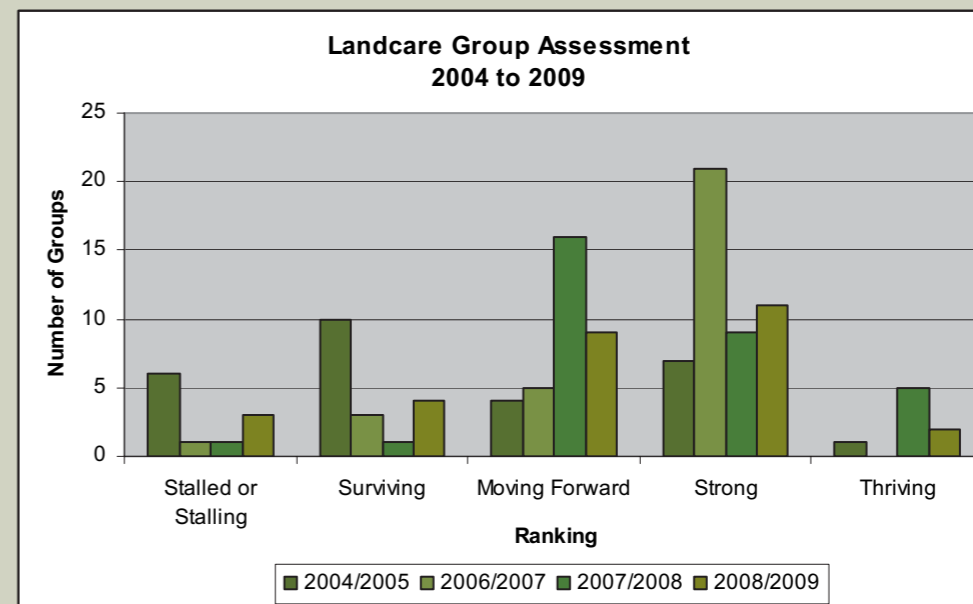
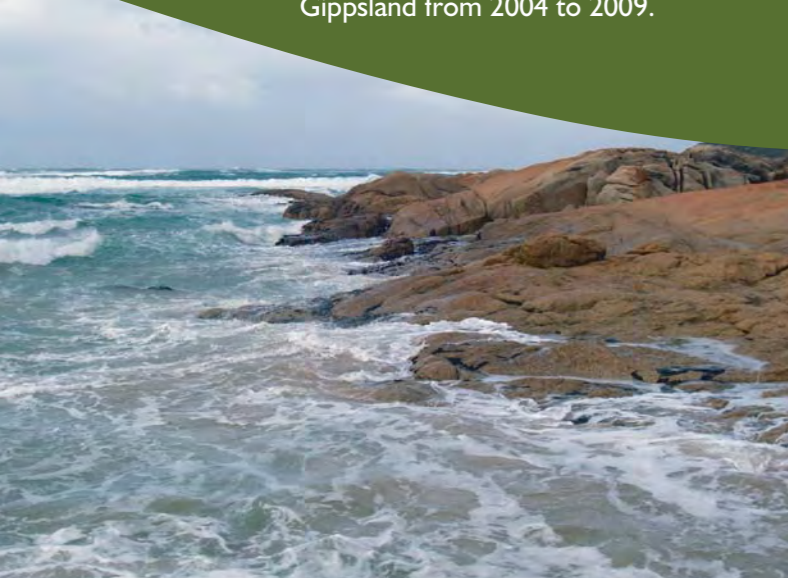


Figure 4 – Assessment of landcare groups functionality and process from 2004 – 2009, please note, there was no data available for 2005/2006.

Networking and forming partnerships are a key contributor to Landcare's success, the Landcare community in East Gippsland has formed over 260 partnerships. Some examples of our partners include the East Gippsland Shire, Green Corps, Department of Primary Industries, Gippsland Lakes Community Health and the Victorian Blackberry Taskforce.

Summary

Landcare in East Gippsland has evolved over the years to become a key deliverer of natural resource management outcomes in the region. The Landcare community in East Gippsland is active, strong, supportive and passionately working together to deliver great social and environmental outcomes as highlighted throughout this report.

This report provides all of the activities, the participants involved and the on ground works that Landcare has conducted and completed over the past five years. This report is based on the formal evaluation method of Bennett's Hierarchy, linking inputs – activities – participation – outcomes.

Inputs

Landcare in East Gippsland has operated with 3.5 Landcare Support Staff and a Regional Landcare Coordinator. The total cost to employ these positions over the five years was \$2 million.

Return on Investment

The return on the initial Landcare investment of \$2 million a cost - benefit return ratio of 1:6 has been achieved. This equates to an economic contribution in excess of \$12 million by the Landcare community in East Gippsland.

Activity

Landcare groups and networks have conducted over 800 formal meetings with over 7,800 people in attendance. In addition to these meetings the Landcare community has held 576 field days, training days and educational activities involving nearly 7,000 people.

In total, 18,555 people have contributed towards and / or participated in various elements of Landcare in the past five years (Figure 1).

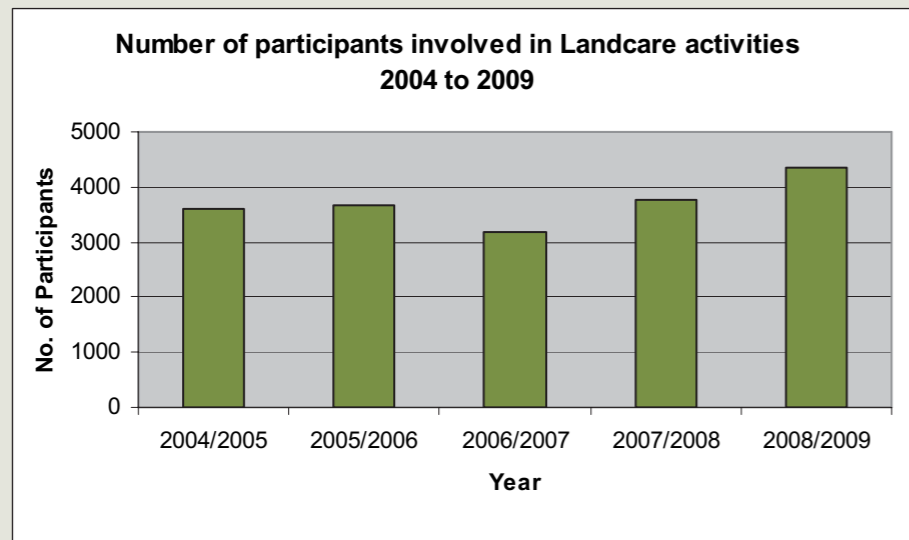


Figure 1 – The total number of participants contributed towards and / or participated in various elements of Landcare from 2004 to 2009.

The Landcare community relies on media and communication tools such as radio and television interviews, newsletters, flyers, brochures and media releases to convey their messages and promote Landcare to the wider community. Landcare has published over 1,200 items of promotional and educational material.

Landcare has developed and submitted 260 successful project proposals from various sources of funding. This includes skills and training, community development, knowledge sharing, social events and on-ground natural resource management activities.

Participation

It has become necessary for Landcare groups to actively plan and undertake their activities using a strategic approach. The number of groups with actions plans has increased and the number of active Landcare groups has varied in the past 5 years (Figure 2).

Action plans play an important role in the delivery of works within a Landcare group and informing local and regional strategies. Action planning is a key role for each Landcare group in the region and groups will continue to operate under this planning framework in the future.

“A cost - benefit return ratio of 1:6 has been achieved”

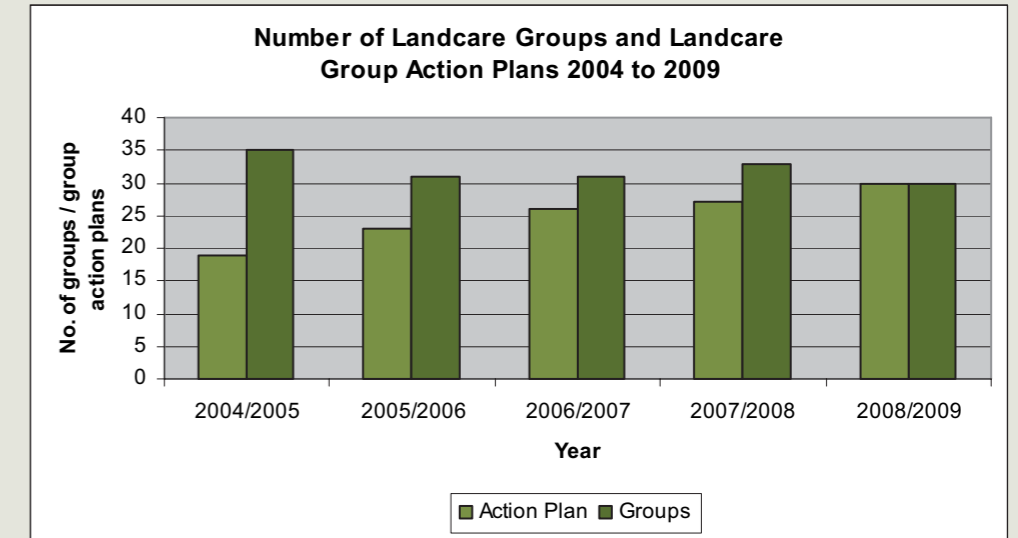


Figure 2 – The number of landcare groups and the number of groups with action plans over the past 5 years.



Outcomes

On-ground works include revegetation, remnant protection and enhancement, riparian protection and improvement, wetland protection, soil conservation, pest plant and animal control. The map (below) shows the different on ground works completed from 2004 - 2009.

The tables to the right present the works conducted including protection and enhancement works (Table 1) and pest plant and animal initiatives (Table 2).

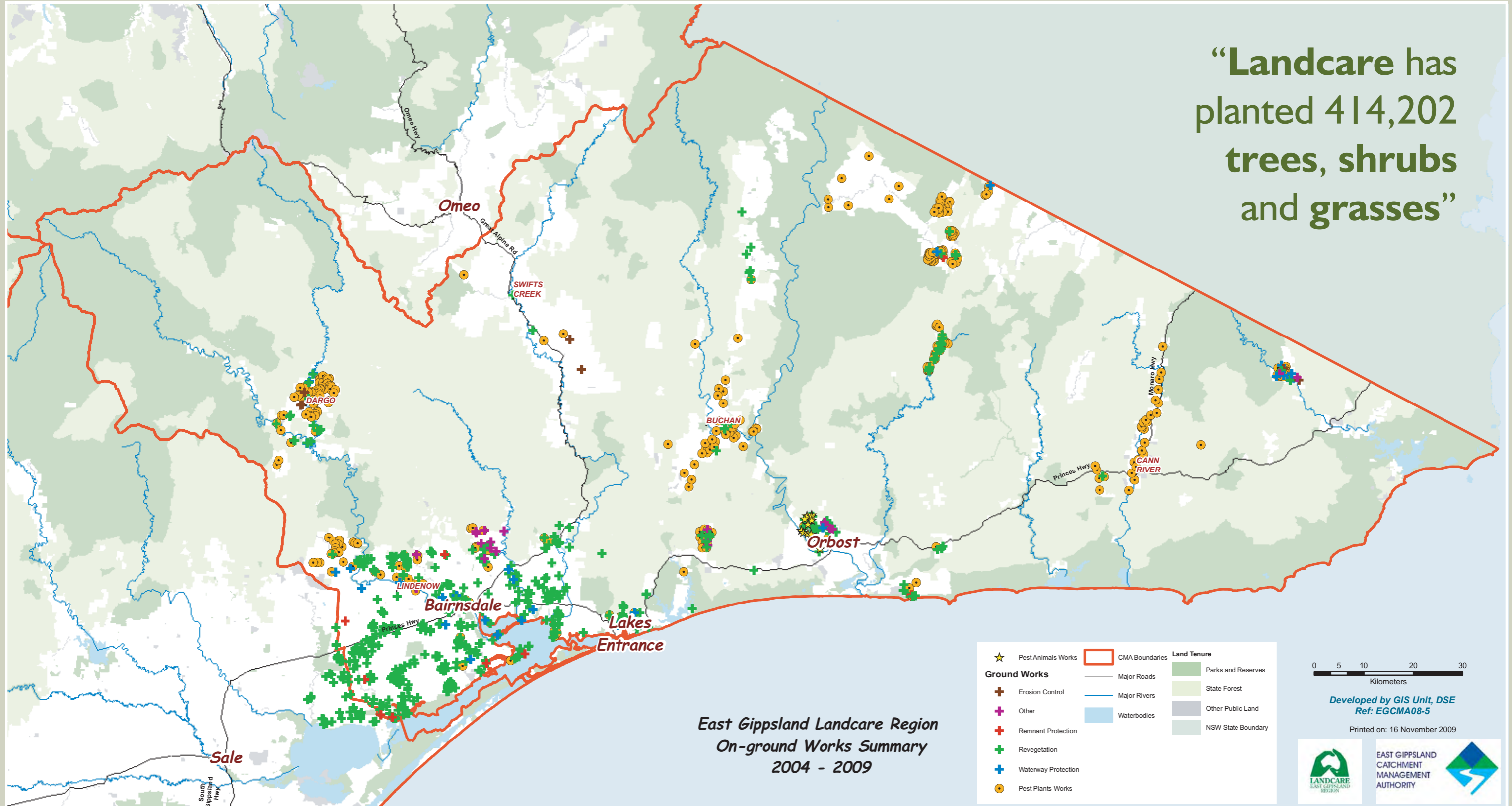
These results show that Landcare has planted 414,202 trees, shrubs and grasses, covering 3,518 hectares in the past five years. Landcare has also undertaken pest initiatives over 51,232 hectares of land.

	Participants	Sites	Hectares	No. of Plants	Fencing (km)
Revegetation	988	446	733	325,203	448
Remnant Protection	37	43	607	12,140	21
Wetland	30	25	40	16,660	9
Riparian	93	52	131	55,389	262
Soil Conservation	74	74	2,007	4,810	16
TOTAL	1,222	640	3,518	414,202	755

Table 1 – Protection and enhancement works conducted by the Landcare community 2004 to 2009.

	Participants	Sites	Hectares	No. of Species
Pest Plant	74	446	36,106	10
Pest Animal	181	43	15,126	13
TOTAL	255	475	51,232	85

Table 2 – Pest plant and animal initiatives conducted by the Landcare community during 2004 to 2009.



“Landcare has planted 414,202 trees, shrubs and grasses”

East Gippsland Landcare Region
On-ground Works Summary
2004 - 2009

Developed by GIS Unit, DSE
Ref: EGMA08-5

Printed on: 16 November 2009



EAST GIPPSLAND
CATCHMENT
MANAGEMENT
AUTHORITY



Contribution towards Regional Catchment Strategy

Landcare in East Gippsland has made a significant contribution towards achieving the targets in the Regional Catchment Strategy (Table 3). The table below outlines the contributions the Landcare community has made towards these goals in the past 5 years.

RCS Target	Level of Contribution	Supporting Comment
By 2008, 60% of the regional community will have a basic understanding of the regions natural resource management issues and know what actions are taking place to manage those issues	High	<ul style="list-style-type: none"> Landcare has directly involved 18,555 people over the past 5 years through various types of engagement activities, this is 44% of the population in East Gippsland
By 2009, there will be a measurable increase in the organisational skills of community based groups	High	<ul style="list-style-type: none"> Over the past five years there has been a change in group health statistics, Figure 5 shows the general trend of the health of each group. As described earlier this assessment is based around the groups organisational skills
By 2007, both agencies and the community will be working within a whole of community / whole of government framework	High	<ul style="list-style-type: none"> In 2008/2009 all Landcare groups are operating with a five year action plan and an annual calendar. Landcare's 262 partners provide support towards a 'whole of government' framework
By 2010, the number of people actively participating in improving natural resource management will increase by 30%	Medium	<ul style="list-style-type: none"> Landcare has accounted for 2,742 people participating in on-ground works across the region
By 2009, the level of community participation and effectiveness in improvement and management of natural resource management will be increased	Medium	<ul style="list-style-type: none"> The overall participation in Landcare is high and we will continue to work towards this target.
By 2015, the area of active tunnel erosion and gully erosion in priority areas will be reduced by 40%, relative to 2005 levels	Medium	<ul style="list-style-type: none"> Over the past five years Landcare has conducted soil conservation works on 2,007 hectares in the region
Key pest plants and animals will be reduced to ecologically sustainable levels	Medium	<ul style="list-style-type: none"> In five years Landcare has conducted pest plant and animal control on 51,232 hectares, this equates to 13.5% of the freehold land in the region
There will be a significant downward trend in rabbit populations, by 2010	Medium	<ul style="list-style-type: none"> Landcare has involved over 70 people in rabbit control works, covering a total of 648 hectares in the past 5 years
There will be a significant downward trend in the number of sheep and native animals killed by wild dogs by 2007	Low	<ul style="list-style-type: none"> Landcare has undertaken control programs over 10,676 hectares of land and involved 66 landholders in the past 5 years.

Table 3 – The contribution towards the Regional Catchment Strategy by Landcare in East Gippsland over the past five years.

Further Information

To find out more about Landcare in East Gippsland visit www.landcarevic.net.au or call (03) 5150 3577